

**SOLUTION FOR**

**INGOT CASTING**

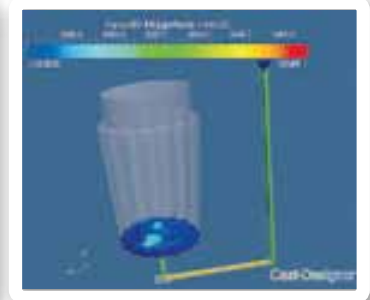
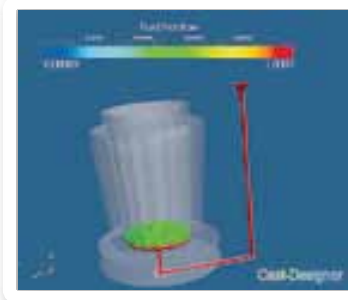
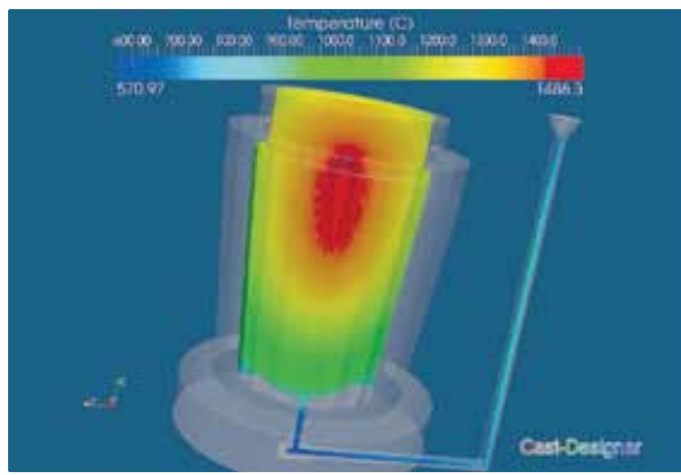
**ECO-PROJECT**



***Production Since 1958***

Jodovit's activities are oriented to the continuous development of products and services to increase the quality and efficiency of productive processes for aluminium foundry.

The close collaboration with our customers and an efficient technical assistance on the main markets characterize our company from than 50 years.



**Jodovit has an exclusive advanced simulation software casting ingots.**

CAST DESIGNER is among the best products in the market.

**Jodovit has own research and development laboratories and produces directly in Italy all range of its materials.**

The result of these experiences guarantees:

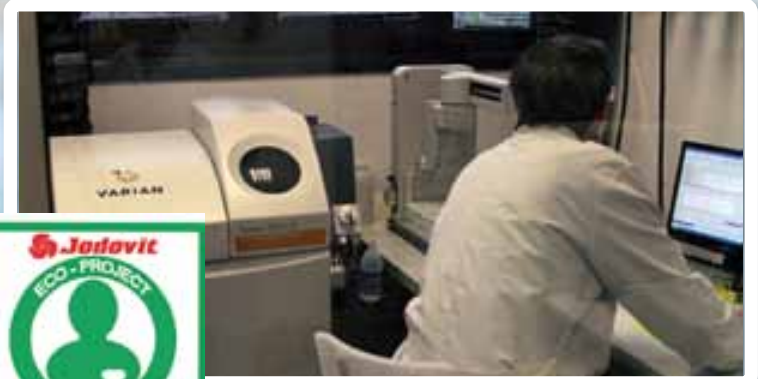
- high technical efficiency of products
- optimization cost-benefit
- specific assistance for areas of competence
- presence on new markets
- development of products and specific solutions
- assistance after sales

Since 2008 Jodovit has started the **ECO-PROJECT** programme in order to reduce dangerous substances in products to protect health.

The whole range of **JODOVIT** materials is totally free from:

**RCF (Refractory Ceramic Fiber)**

classified carcinogenic according to CLP regulation



# Plates and Composed Feeding Heads

## ISOPAN - LITEPAN - EXOPAN - HARDPAN

The material is produced according to the drawing of molds.

Highly refractory, exothermic or insulating material designed to reduce piping and segregation of a killed steels.

A range of products made up of sectors and wedges.



### Benefits:

- Material is light in weight, strong and thermic resistant, suitable for all sizes of moulds
- Tapered corner pieces compensate for slight mould differences, giving good wedging action in all circumstances
- The shape of tiles and the wedging action of corner pieces reduce gaps between the assembly and the mould
- After use, the material forms a powdery or partially sintered residue which removes cleanly from the ingot.

# Anti-piping compound Boards

## EXOCAP

Insulating or exothermic boards, complementary to hot tops, produced according to the specific drawings.

A valid alternative to replace exothermic or insulating powder.

### Benefits:

- Complete covering of steel surface
- Environmental advantages because the powder is not used
- Low fume of low toxicity
- The cover is placed in advance, so no necessity of worker's operation

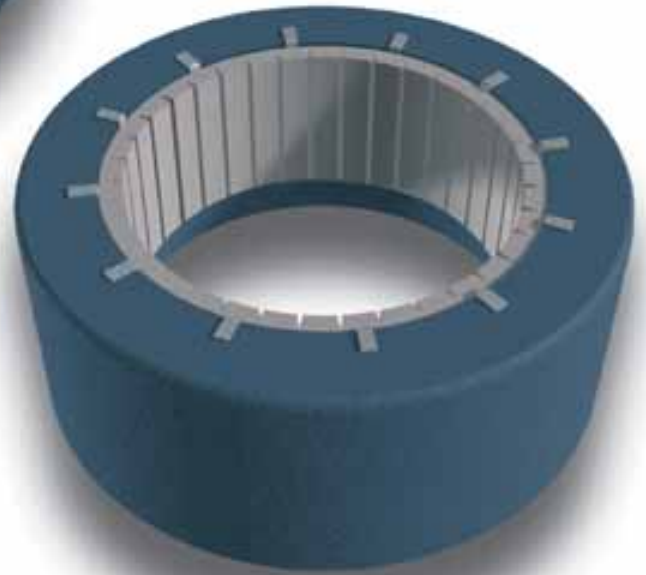


# Insulating and Exothermic Flexible Chains

## ISOFLEX - LITFLEX - EXOFLEX - HARDFLEX

Flexible chains made of bricks in different kind of material: standard insulating, high insulating, exothermic and very hard thermic resistant material.

Suitable for round hot top with diameter bigger than 500 mm.



### Benefits:

- Multiple use for replacement of many monolithic hot tops
- Reduced storage place
- Immediate availability for any possible changes of ingot molds
- High insulation, valid alternative to RCF materials
- Easy assembling thanks to flexibility and suspension hooks
- Dimension variation of sectors for better performance
- Possibility of easier application by gluing on the mold with **COLLATEX FLEX**

## Insulating and covering

### ISOLINING

Insulating panels with high thermal resistance suitable for the insulation of ingot heads, for the covering of the first layers in industrial furnaces and thermic equipment if necessary high resistance to flames and thermal shock.



# Monolithic and Sector hot tops

## VOLUMIX ISO E - VOLUMIX EXO

Insulating and Exothermic hot tops designed according to specific drawings in one piece or in sector for big diameter or at customer's request.

### Benefits:

- Bending radius designed to be fit to the ingot mold
- Easy and simple application. necessary for high productivity
- High insulation and feeding performance
- Hot top surface free from residual material
- Easy to cut
- Friability of residual material after casting, it is not necessary to clean the hot top



## Panels



### Benefits:

- Produced with low biopersistance fiber according to the European Directive CLP. No special labels needed
- Easy to cut
- Specially suitable for slab application
- After casting there is no step on the ingot
- High insulation and excellent temperature resistance



# Flux Protection Rings, Argon connections and Slag Separators

**PROFLUX** is a multi-sector material for the protection of the molten metal flow during the operations of ingot mold casting.

**CONEX** is designed in order to avoid the fall of Chromite powders and slags in the feeding ingot channels during the opening of the sliding ladle box.



## Benefits:

- Suitable with argon connection and distribution system inside
- Protection of the molten metal flow from oxidation during casting
- Avoided discharges and metal jets out of the casting column
- Protection of the bottom of ladle

## PROFLUX - CONEX



## Seal Ingot



The Seal for Ingot positioned between the plate and the lower part of the ingot mould carries out two important functions:

- Filling and recuperation of depressions due to erosions
- Avoid the effect fountain of the metal who enters inside the ingot mould
- Homogeneous distribution on the surface of the **UPSTEEL** bottom pouring powder
- Elimination of melt metal splashes on the walls of the ingot moulds

## Very Special Vetrificiant Ceramic compound Fireclay for gating system

### COLLATEX - REFRA

**COLLATEX 25** is a bi-component vetrification to seal the refractory tubes to the ingot mold plates.

#### Benefits:

- Very strong connection of all bricks
- No gas emission during the melting
- Increase the thermal and mechaninc resistance of refractory
- After casting the channels of plate are clean, it is not necessary maual operations



**REFRA** are available in different shapes such us tubes, funnels, connection or reduction tubes and T or L pieces.

#### Benefits:

- Precision of construction for a right connection
- High refractoriness and metallstatic pressure resistance

## Exothermic, insulating anti-piping fluxes Bottom Pouring Fluxes

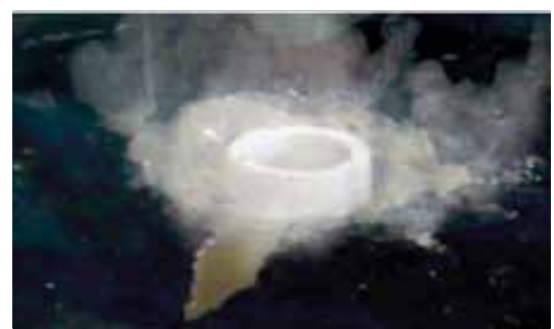
### TERMIX - CALCINEX - UPSTEEL

**TERMIX** is a range of anti-piping powders formulated for every feeding necessity, according to the type of casting.

- Reduced emission of fumes
- Expansible, double effect exothermic and insulating

**CALCINEX** is a range of insulating flux in powder o granular form, special suitable for big surface of hot top.

- No reaction or gas propagation
- Very low density, high insulation



**UPSTEEL** is a synthetic flux for the control of the melting behaviour. Suitable with standard or low carbon.

- Improvement of ingot surface quality
- Avoiding cold lapping and gas porosity
- Improvement of the capture of non-metallic inclusions

